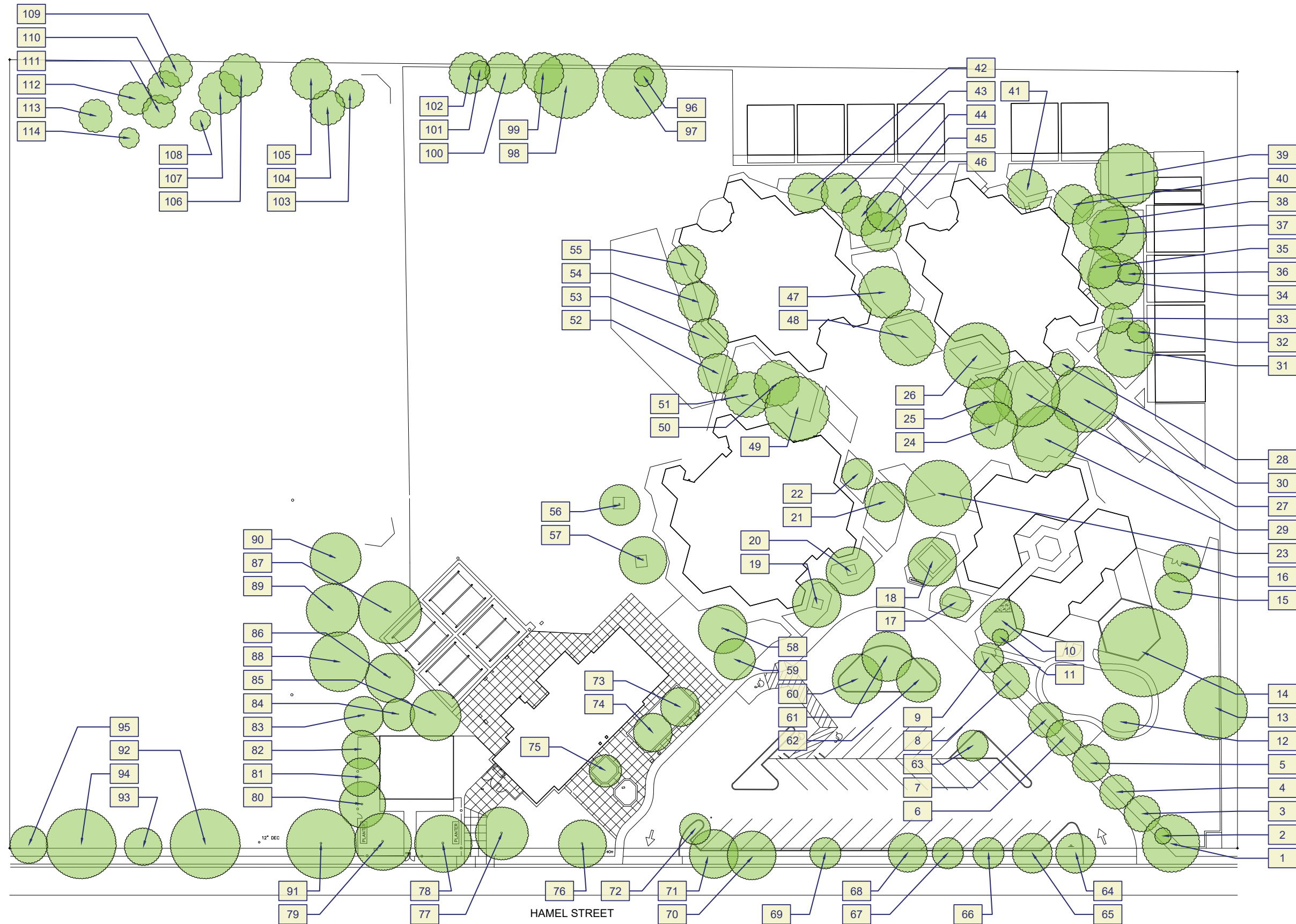


Pioneer Elementary School
5215 Hamel St, Davis, CA 95618



Tree Data

ID	Tree species - Common Name	Botanical Name	Deciduous/ Evergreen	Approx. Height Range (ft)	Approx. Canopy Width (ft)	Trunk Size (DBH) (in)	Observable Health Condition	Notes
PN-1	Valley Oak	Quercus lobata	Deciduous	48	37	16	Strong lean towards street blocking street light	
PN-2	Valley Oak	Quercus lobata	Deciduous	42	11	6	No observable problems	
PN-3	London Plane	Platanus x acerifolia	Deciduous	44	24	10	No observable problems	
PN-4	London Plane	Platanus x acerifolia	Deciduous	46	31	12	No observable problems	
PN-5	Ornamental Pear	Pyrus calleryana	Deciduous	53	33	18	No observable problems	
PN-6	London Plane	Platanus x acerifolia	Deciduous	48	29	10	Some dead branches	
PN-7	London Plane	Platanus x acerifolia	Deciduous	46	31	13	Some dead branches	
PN-8	London Plane	Platanus x acerifolia	Deciduous	64	31	15	Some dead branches	
PN-9	Arborvitae	Thuja	Evergreen	29	29	6	No observable problems	Multi trunk (6 leaders)
PN-10	Eastern Redbud	Cercis canadensis	Deciduous	35	29	6	Multi trunk possible decay at base - should have arborist check	Multi trunk (5 leaders)
PN-11	Crape Myrtle	Lagerstroemia indica	Deciduous	20	22	3	Crowded by other trees leaning on the fence, some damage on trunk	Multi trunk (3 leaders)
PN-12	Deodar Cedar	Cedrus deodara	Evergreen	20	8	3	No observable problems	
PN-13	Deodar Cedar	Cedrus deodara	Evergreen	70	50	29	No observable problems	
PN-14	Sawleaf Zelkova	Zelkova serrata	Deciduous	70	62	28	Poured-in-place rubber poured over base of tree, rubber is lifting	
PN-15	Coast Redwood	Sequoia sempervirens	Evergreen	64	28	22	Surface roots	
PN-16	Apricot	Prunus armeniaca	Deciduous	36	45	14	Base of tree has significant roots exposed	
PN-17	Elm	Ulmus	Deciduous	22	20	5	Noticeable trunk damage at main crotch of branches	
PN-18	Elm	Ulmus	Deciduous	31	24	11	Growth is lopsided due to a removed branch rotting at base of that branch	
PN-19	Chinese Pistache	Pistacia chinensis	Deciduous	37	26	12	Lifting pavers, concrete band, and tree grate	
PN-20	Chinese Pistache	Pistacia chinensis	Deciduous	40	35	14	Lifting pavers, concrete band, and tree grate	
PN-21	Coast Redwood	Sequoia sempervirens	Evergreen	64	33	27	None, large presence of boxelder bugs	
PN-22	Japanese Maple	Acer palmatum	Deciduous	13	11	1	No observable problems	Multi trunk (3 leaders)
PN-23	Chinese Pistache	Pistacia chinensis	Deciduous	46	48	20	Lifting concrete, surface roots	
PN-24	Sawleaf Zelkova	Zelkova serrata	Deciduous	62	51	29	Lifting concrete, surface roots and dead branches	
PN-25	Sawleaf Zelkova	Zelkova serrata	Deciduous	57	44	18	Large dead stem should be removed	
PN-26	Sawleaf Zelkova	Zelkova serrata	Deciduous	55	62	24	Dead branches	
PN-27	Sawleaf Zelkova	Zelkova serrata	Deciduous	55	51	28	Large cankers on branches, dead branches	
PN-28	Eastern Redbud	Cercis canden	Deciduous	8	4	1	No observable problems	
PN-29	Sawleaf Zelkova	Zelkova serrata	Deciduous	64	59	27	Large dead limbs	
PN-30	Deodar Cedar	Cedrus deodara	Evergreen	44	24	12	No observable problems	
PN-31	Coast Redwood	Sequoia sempervirens	Evergreen	57	31	26	No observable problems	
PN-32	Altas Cedar	Cedrus atlantica	Evergreen	20	7	2	Planted too low, tree is in poor condition	

Data Collection - Pioneer Elementary School - Tree Data

PN-33	Pine	Pinus	Evergreen	22	15	6	Damage at base of trunk	
PN-34	Coast Redwood	Sequoia sempervirens	Evergreen	62	31	26	No observable problems	
PN-35	Coast Redwood	Sequoia sempervirens	Evergreen	55	26	18	No observable problems	
PN-36	Atlas Cedar	Cedrus atlantica	Evergreen	26	9	2	No observable problems	Multi trunk (2 leaders)
PN-37	Coast Redwood	Sequoia sempervirens	Evergreen	77	33	26	Surface roots	Electrical vault at base
PN-38	Coast Redwood	Sequoia sempervirens	Evergreen	75	31	25	No observable problems	
PN-39	London Plane	Platanus x acerifolia	Deciduous	55	44	20	No observable problems	
PN-40	London Plane	Platanus x acerifolia	Deciduous	53	48	17	No observable problems	
PN-41	London Plane	Platanus x acerifolia	Deciduous	24	22	8	Dead branches, possible rot in trunk	
PN-42	Coast Redwood	Sequoia sempervirens	Evergreen	44	24	20	No observable problems	
PN-43	Coast Redwood	Sequoia sempervirens	Evergreen	42	20	15	No observable problems	
PN-44	Coast Redwood	Sequoia sempervirens	Evergreen	62	24	20	No observable problems	
PN-45	Coast Redwood	Sequoia sempervirens	Evergreen	42	18	9	No observable problems	
PN-46	Coast Redwood	Sequoia sempervirens	Evergreen	66	40	25	Sucker growth at base	
PN-47	Sawleaf Zelkova	Zelkova serrata	Deciduous	44	46	24	Surface roots	
PN-48	Chinese Pistache	Pistacia chinensis	Deciduous	29	35	16	No observable problems	
PN-49	Sawleaf Zelkova	Zelkova serrata	Deciduous	55	51	24	Major limbs are rubbing each other - maybe a cause for failure of most limbs to the east	
PN-50	Sawleaf Zelkova	Zelkova serrata	Deciduous	40	42	21	circling routes at base, dead branches of top	
PN-51	Sawleaf Zelkova	Zelkova serrata	Deciduous	42	29	19	Dead branches	
PN-52	London Plane	Platanus x acerifolia	Deciduous	40	26	21	Dead branches	
PN-53	London Plane	Platanus x acerifolia	Deciduous	40	24	13	Dead branches	
PN-54	London Plane	Platanus x acerifolia	Deciduous	40	29	9	Dead branches	
PN-55	London Plane	Platanus x acerifolia	Deciduous	40	33	14	Dead branches	
PN-56	Sawleaf Zelkova	Zelkova serrata	Deciduous	24	24	7	Rubbing limbs, dead branches	Multi trunk (3 leaders)
PN-57	Chinese Tallow	Sapium sebifera	Deciduous	40	35	24	New asphalt was poured too close to base of tree	
PN-58	Cork Oak	Quercus suber	Evergreen	42	40	21	No observable problems	
PN-59	Pine	Pinus	Evergreen	24	24	17	No observable problems	
PN-60	Sawleaf Zelkova	Zelkova serrata	Deciduous	44	40	24	Dead limbs	
PN-61	Sawleaf Zelkova	Zelkova serrata	Deciduous	40	42	22	Tree appears stressed due to superficial growth along limbs	
PN-62	Sawleaf Zelkova	Zelkova serrata	Deciduous	51	46	36	Dead branch	
PN-63	Ornamental Pear	Pyrus calleryana	Deciduous	39	39	15	Mostly dead, should be removed	
PN-64	Valley Oak	Quercus lobata	Deciduous	56	50	14	No observable problems	
PN-65	Chinese Pistache	Pistacia chinensis	Deciduous	50	39	7	Lifting sidewalk	
PN-66	Chinese Pistache	Pistacia chinensis	Deciduous	39	39	12	Lifting sidewalk, exposed roots	
PN-67	Valley Oak	Quercus lobata	Deciduous	45	22	11	No observable problems	
PN-68	Chinese Pistache	Pistacia chinensis	Deciduous	45	45	12	No observable problems	
PN-69	Chinese Pistache	Pistacia chinensis	Deciduous	31	31	12	Major limbs were topped, a lot of superficial growth	
PN-70	Chinese Pistache	Pistacia chinensis	Deciduous	50	45	13	No observable problems	
PN-71	Valley Oak	Quercus lobata	Deciduous	67	62	19	Lifting sidewalk	
PN-72	Pomegranate	Punica granatum	Deciduous	12	20	5	Dead limb, close to the curb, should be removed	dual trunk

PN-73	Sawleaf Zelkova	Zelkova serrata	Deciduous	42	31	11	No observable problems	
PN-74	Sawleaf Zelkova	Zelkova serrata	Deciduous	42	25	9	No observable problems	
PN-75	Citrus	Citrus	Evergreen	22	22	5	No observable problems	
PN-76	London Plane	Platanus x acerifolia	Deciduous	62	45	17	Dead branches	
PN-77	London Plane	Platanus x acerifolia	Deciduous	62	39	15	Dead branches	Electrical vault nearby
PN-78	Common Hackberry	Celtis occidentalis	Deciduous	64	50	28	Some dead branches	
PN-79	Common Hackberry	Celtis occidentalis	Deciduous	59	39	22	No observable problems	
PN-80	Coast Redwood	Sequoia sempervirens	Evergreen	59	34	21	No observable problems	
PN-81	Chinese Pistache	Pistacia chinensis	Deciduous	39	28	9	No observable problems	
PN-82	Chinese Pistache	Pistacia chinensis	Deciduous	48	50	15	Crossing branches can be pruned	
PN-83	Coast Redwood	Sequoia sempervirens	Evergreen	59	34	22	Surface roots	
PN-84	American Sweetgum	Liquidambar styraciflua	Deciduous	59	11	11	Severe damage at base of tree, one clear major limb failure, tree should be removed	
PN-85	Honey Locust	Gleditsia triacanthos	Deciduous	42	31	15	Major pruning needed	
PN-86	London Plane	Platanus x acerifolia	Deciduous	59	45	20	Dead branches	
PN-87	London Plane	Platanus x acerifolia	Deciduous	62	50	20	Dead branches	
PN-88	London Plane	Platanus x acerifolia	Deciduous	67	45	17	No observable problems	
PN-89	London Plane	Platanus x acerifolia	Deciduous	67	45	15	No observable problems	
PN-90	Chinese Pistache	Pistacia chinensis	Deciduous	36	28	11	No observable problems	
PN-91	Chinese Hackberry	Celtis sinensis	Deciduous	53	56	19	Surface roots, major crotch splitting, arborist needed	
PN-92	Common Hackberry	Celtis occidentalis	Deciduous	62	56	30	Dead branches	
PN-93	Sawleaf Zelkova	Zelkova serrata	Deciduous	39	34	8	No observable problems	
PN-94	Common Hackberry	Celtis occidentalis	Deciduous	67	50	32	No observable problems	
PN-95	Weeping Cherry	Prunus pendula	Deciduous	31	22	18	Significant damage at base of tree, tree mostly dead, should be removed	
PN-96	Eucalyptus	Eucalyptus	Evergreen	18	17	7	Significant decay and trunk should be removed	
PN-97	Valley Oak	Quercus lobata	Deciduous	78	48	27	Asphalt right at base of tree	
PN-98	Eucalyptus	Eucalyptus	Evergreen	78	67	40	Asphalt right at base of tree, Signs of previous large limb failure	Eucalyptus are known for large limb failure should remove
PN-99	Coast Live Oak	Quercus agrifolia	Evergreen	28	17	6	Growing out of base of fence, should be removed	
PN-100	Valley Oak	Quercus lobata	Deciduous	49	22	10	No observable problems	
PN-101	Coast Live Oak	Quercus agrifolia	Evergreen	13	8	5	Growing out of base of fence, should be removed	
PN-102	Eucalyptus	Eucalyptus	Evergreen	92	62	19	Asphalt right at base tree, signs of previous large limb failure	dual trunk
PN-103	Coast Redwood	Sequoia sempervirens	Evergreen	28	17	8	Damage at base of trunk	
PN-104	Coast Redwood	Sequoia sempervirens	Evergreen	53	28	15	No observable problems	
PN-105	Coast Redwood	Sequoia sempervirens	Evergreen	45	22	12	Significant damage to trunk	
PN-106	Coast Redwood	Sequoia sempervirens	Evergreen	28	22	10	No observable problems	
PN-107	Coast Redwood	Sequoia sempervirens	Evergreen	62	31	16	No observable problems	
PN-108	Eucalyptus	Eucalyptus	Evergreen	22	11	6	Mostly dead, should be removed	
PN-109	Coast Redwood	Sequoia sempervirens	Evergreen	34	22	18	Tree under stress, sucker growth, dead limbs	

Data Collection - Pioneer Elementary School - Tree Data

PN-110	Coast Redwood	Sequoia sempervirens	Evergreen	59	28	14	No observable problems
PN-111	Coast Redwood	Sequoia sempervirens	Evergreen	48	22	13	Sucker growth
PN-112	Coast Redwood	Sequoia sempervirens	Evergreen	31	17	7	No observable problems
PN-113	Coast Redwood	Sequoia sempervirens	Evergreen	34	14	10	No observable problems
PN-114	Coast Redwood	Sequoia sempervirens	Evergreen	62	22	17	No observable problems